

DEEP SOAKING TUB

# Omnitub 1900×900

1900 × 900 × 625 mm

600 mm internal soaking depth · 625 mm external height

Hand-built Omnigel® · white in stock · any colour made to order · self-levelling feet · 30-year warranty

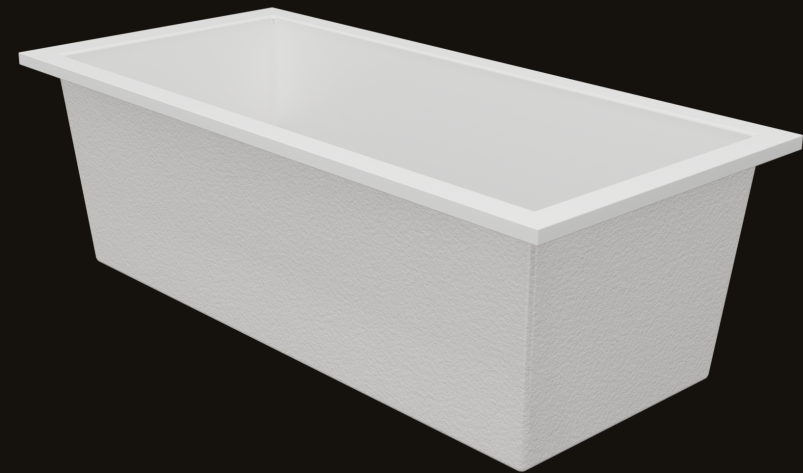
ORDER OR ASK US ANYTHING

ONLINE [www.omnitub.co.uk](http://www.omnitub.co.uk)

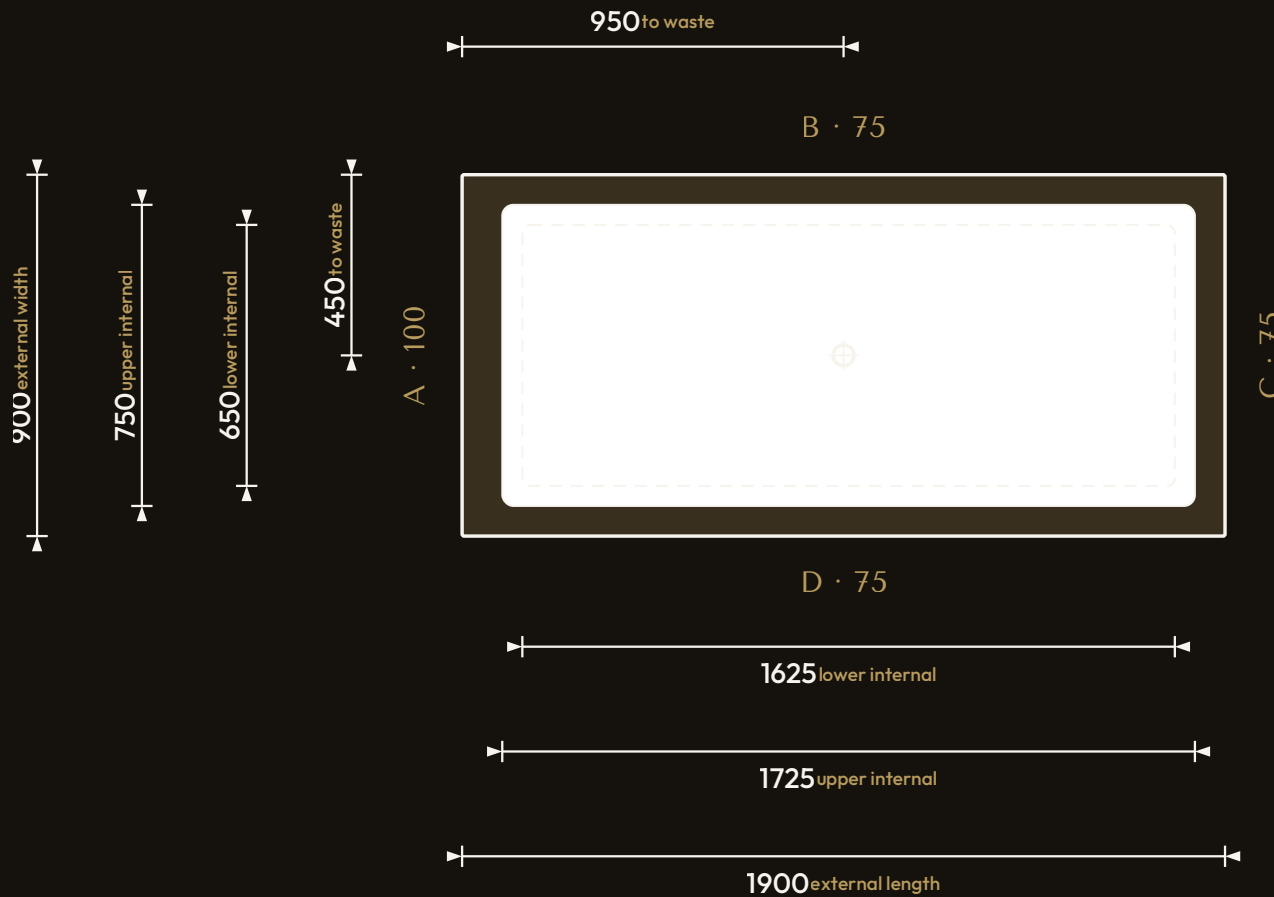
PHONE +44 1934 751 200

WHATSAPP +44 1934 751 200

EMAIL [info@omnitub.co.uk](mailto:info@omnitub.co.uk)



VIEWED FROM ABOVE

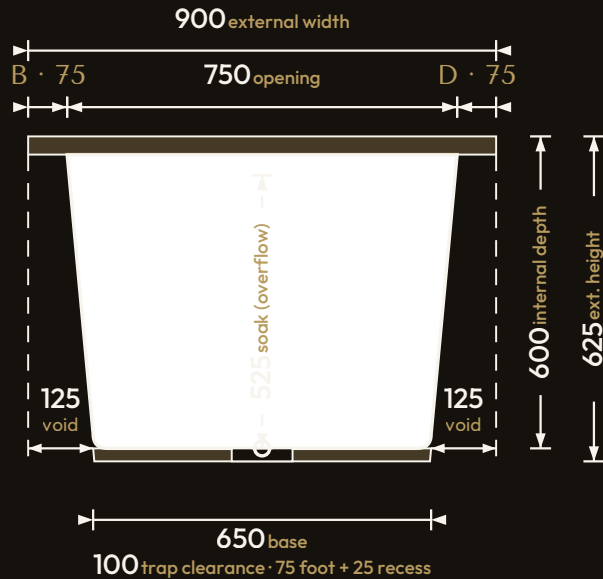


Specification

DIMENSIONS	1900 × 900 × 625 mm
INTERNAL DEPTH	600 mm
EXTERNAL HEIGHT	625 mm
SOAK DEPTH	up to 600 mm · 525 mm with overflow
OPENING (INTERNAL)	1725 × 750 mm
BASE (INTERNAL)	1625 × 650 mm
WATER CAPACITY — EMPTY TUB	~679 L · filled to the 525 mm soak line with no one in
WATER IN USE — BATHER(S) IN THE TUB	~600 L (1) · ~521 L (2 people)
NET WEIGHT	36.4 kg (empty)
FLANGES	A 100 mm · B/C/D 75 mm
VERTICAL FLANGE	35 mm
TAPER	50 mm per side over the depth
CORNER RADIUS	~27.5 mm internal
WASTE	∅ 52 mm (1½" BSP) hole
MATERIAL	Hand-built Omnigel® · 7-layer built-up system
SURFACE	Hand-polished Omnigel®
COLOUR	Any colour · white shown = BS 4800 O0 E 55
INSTALLATION	Above-floor, fully supported & dead level · or undermounted, overmounted, inset, part-submerged or raised
DELIVERY	Free UK Mainland Named Day Delivery · international to 220+ countries
WARRANTY	30-year
MADE IN	Somerset, United Kingdom

## FOR INSTALLATION

### END PROFILE



### SIDE PROFILE

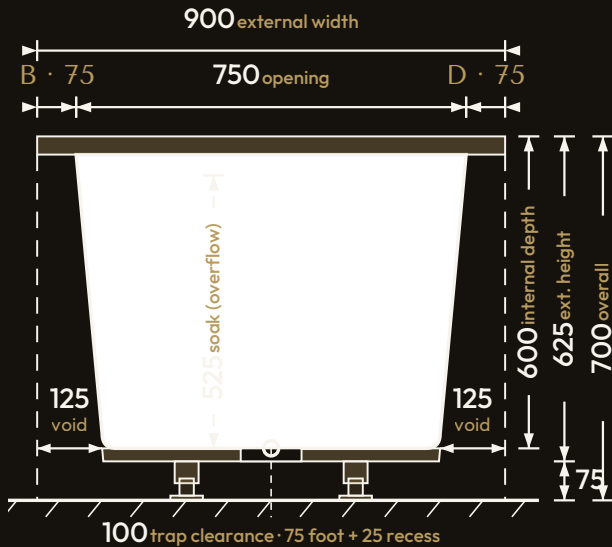


35 mm vertical flange · 50 mm taper / side · both profiles

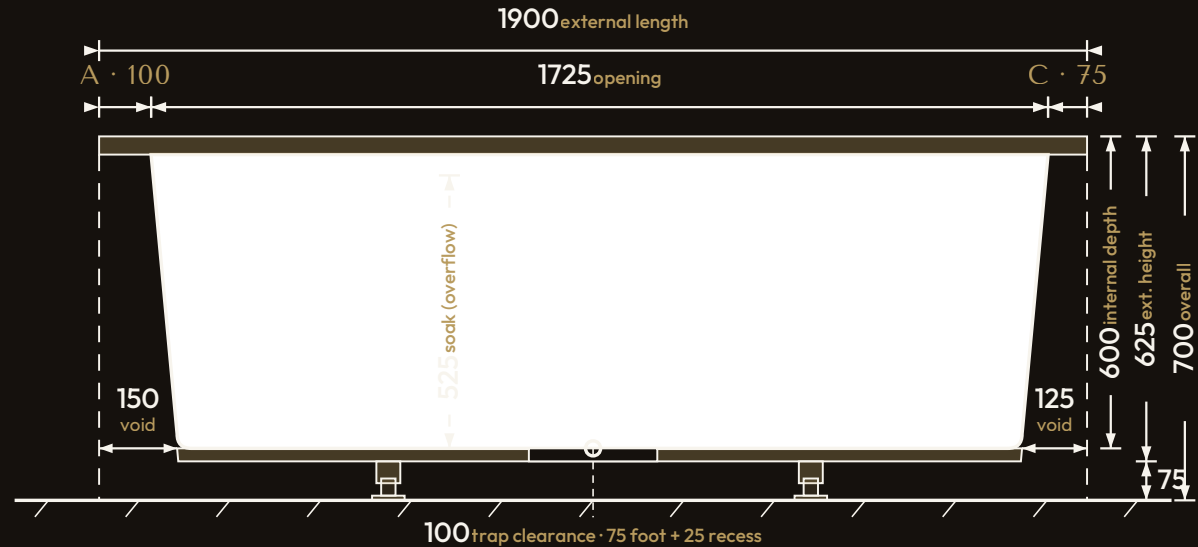
**Profiles (no feet):** END = section through the width; SIDE = section through the length, drawn to the same scale. Full-width external body with a recessed, tapered soaking well — 50 mm/side over the 600 mm depth, on a 35 mm vertical flange below the flat rim. The "void" is the clearance each side at the base for soil-stack / pipe runs. Flange A 100 mm; B, C, D 75 mm. All dimensions in millimetres.

## FOR INSTALLATION · WITH FEET

### END PROFILE



### SIDE PROFILE



Omnitub® self-levelling feet · not fixed height · wind to suit · 700 mm benchmark · adjusts up to ~760 mm · both profiles

**Installed on the feet:** 4 Omnitub® self-levelling feet (END view shows 2, SIDE view shows 2). They are **not fixed height** — extend, lock, then wind down to suit; commonly set to a **700 mm overall** install height (625 mm tub + 75 mm foot) and adjustable beyond. The underside recess gains 25 mm, giving 100 mm of trap clearance at the waste. No load figure published. All dimensions in millimetres.

GET IN TOUCH

# Omnitub Ltd

特 オムニタブ HANDMADE IN SOMERSET

ONLINE [www.omnitub.co.uk](http://www.omnitub.co.uk)

PHONE +44 1934 751 200

WHATSAPP +44 1934 751 200

EMAIL [info@omnitub.co.uk](mailto:info@omnitub.co.uk)

SHOWROOM Unit 6 Works 22, Bennett Road, Highbridge, TA9 4PW

WORKSHOP Unit 5 Batch Business Park, Lympsham, BS24 OES

White is always in stock; every colour is made to order. Self-levelling feet supplied.  
Every Omnitub is hand built in Somerset from our 7-layer Omnigel® built-up system,  
backed by a 30-year warranty.

